

# W-9: Upper Leon Creek and W-52 Culebra Creek Capacity Relief Contractor Outreach Meeting

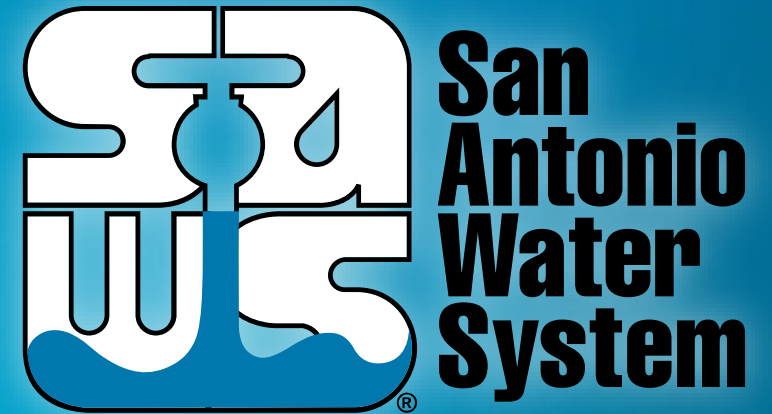
Cristina Brantley, P.E., Director, Engineering Pipelines, SAWS

Cristina DeLaGarza, P.E., Manager, Engineering Pipelines, SAWS

Gerardo Gomez, P.E., Manager, Engineering Pipelines, SAWS

Roxanne Eguia, SMWB Program Specialist, SAWS

Lindsay Esquivel, Contract Administrator, SAWS



August 28, 2023 at 2:00 PM

MAKING SAN ANTONIO  
**WATERFUL**



# WebEx Meeting Information

- Please use the Chatbox feature in WebEx to sign in for this meeting
  - Name, company name and contact information
- You can also use this WebEx chat to submit questions
  - SAWWS will read questions aloud at the end of the meeting
- Please keep your devices muted during the meeting
- The PowerPoint presentation will be posted on the SAWWS website after this meeting.

# Oral Statements

Oral statements or discussion during this Contractor Outreach Meeting will not be binding, nor is there a guarantee that the discussion will result a change to the terms or conditions of the construction contract for the project.

# Overall Meeting Agenda

- Objective
- SMWB Information
- Solicitation Overview
- Key Dates
- Additional Reminders



# Objective:

The project(s) will address undersized mains, abandon poor condition pipeline segments, and relocate the alignment in order to reduce sanitary sewer overflows in northwest San Antonio as part of work required under the EPA Consent Decree.

- W-9  
The Project will tunnel approximately 48% of the project length and open cut the rest to minimize the clearing of trees while at the same time placing the new sewer system away from the creek bed as much as possible therefore preventing future damage to the new system.
- W-52  
The project will tunnel approximately 60% of the project length and open cut the rest to minimize the clearing of trees while at the same time placing the new sewer system away from the creek bed as much as possible therefore preventing future damage to the new system.

# W-9 Upper Leon Creek Agenda

- W-9 Project Overview
  - Location
  - Overall Alignment
  - Project Details
    - Trenchless
    - Curved Tunnel
    - Tunnel Segments
  - CoSA Parks/Trail/Trees Protection
  - Contractor Requirements

# W-52 Culebra Creek Capacity Relief Agenda

- W-52 Project Overview
  - Location
  - Alignment Features
  - CoSA Parks/Trails/Trees
  - Project Details - Tunneling
  - Sequencing Required
  - Project Details – Bypass/Conflicts
  - Construction Access
  - Abandonment

# 90% draft plans for both W-9 and W-52

- 90% draft Plans for both W-9 and W-52 are now available with the signing of a Disclaimer form. Contractors may provide comments and/or questions on the draft plans for both projects in writing. Submit any comments or questions via email to Lindsay Esquivel at [Lindsay.esquivel@saws.org](mailto:Lindsay.esquivel@saws.org) **no later than 4:00 p.m. September 28, 2023.** When submitting questions or comments, please clearly identify the project name.



# Mandatory SMWB Goal

Industry	Aspirational SMWB Goal
Construction	TBD

- The mandatory SMWB goal is expressed as the % of your total price proposal
- SMWBs must have a physical location in one of the following counties: Bexar, Comal, Guadalupe, Hays, Kendall, Travis, or Williamson
- SMWBs must be certified as “SBE” by the South Central Texas Regional Certification Agency, or by the State of Texas Historically Underutilized Business (HUB) Program (in lieu of SBE certification).

# SMWB Scoring:

- SMWB Scoring Method: Up to 10 Points (by percentage) for meeting or exceeding the stated mandatory SMWB goal.
  - Meeting the mandatory SMWB goal = 10 SMWB points.
  - Not meeting the mandatory SMWB goal = 0 SMWB points.
  - If a Respondent does not meet the mandatory SMWB goal, proof of Good Faith Outreach Efforts are required to avoid disqualification.

# Good Faith Effort Plan (GFEP) FAQs

- **Q: Is the % SMWB goal mandatory?**

A: Yes. Respondents that meet the goal may earn all SMWB Points. If the goal is not met, proof of outreach efforts is required with the submittal.

- **Q: What if I am having trouble finding SMWB subcontractors?**

A: The South Central Texas Regional Certification Agency (SCTRCA) has a search portal at [www.sctrca.org](http://www.sctrca.org).

- **Q: What if my business is SMWB-certified? Do I need to find SMWB subs?**

A: If your firm is SMWB-certified, you will most likely meet the goal. The GFEP is a required document and needs to be submitted even if you, as the prime, fulfill the goal.

- **Q: Do I need to include all my subcontractors in the GFEP or just those that qualify towards the SMWB goal?**

A: All subcontractors (and suppliers) need to be included in the GFEP, even those that may not count towards the SMWB goal.

- **Q: What if I have questions about the GFEP?**

A: Please contact the Interim SMWB Program Manager at [Susan.Rodriguez@saws.org](mailto:Susan.Rodriguez@saws.org). GFEP questions can be asked at any time before the submittal is due.



# Post Award: Subcontractor Payment & Utilization Reporting (S.P.U.R.) System

1. Subcontractor & Supplier Payment Tracking
2. Subcontractor and Supplier Additions or Substitutions
3. Must be Current and Accurate before Retainage is released

<https://saws.smwbe.com>



The screenshot shows the homepage of the San Antonio Water System's Subcontractor Payment & Utilization Reporting System. The page features a blue header with the San Antonio Water System logo, a "OUR MAIN SITE" link, and a "CONTACT SUPPORT" button. The main content area has a background image of industrial water treatment equipment and displays the title "Subcontractor Payment & Utilization Reporting System" with a "Log In" button. Below this, there are three columns of links: "System Training" (Learn how to fully utilize our system with a live trainer), "About the System" (Learn more about this system and how it works today), and "Account Access" (Lookup Vendor accounts or reset user passwords). The footer contains the text: "The Subcontractor Payment & Utilization Reporting System is powered by B2Gover Software © Copyright 2018."



# Solicitation Overview

- Both projects will be solicited using the Request for Competitive Sealed Proposals (RFCSP) alternative delivery method.
- Proposals will be evaluated based on qualifications, experience, teaming, past projects, SMWB and price.
  - Price will not be the sole determining factor and will likely be 40%.
  - Safety will be scored as part of the evaluation criteria.
- Contractor's will utilize Evaluation Criteria forms to respond for majority of the proposal.
- Respondents will be required to submit a company financial statement with their proposals for the most complete fiscal year.

## Solicitation Overview

- Contractor's will be required to provide projects as part of their proposal that are similar to these projects (involving tunneling, pipe diameter, etc.)
  - This will include similar projects by Key Subcontractors as well
- Prime contractors should start identifying these projects ahead of time
  - Reach out to Owners now to verify contact information is still valid to ensure SAWS can verify references
    - If SAWS is unable to make contact with a project reference it may result a deduction of points

## Required Experience

- The solicitation will include Required Experience by the Prime Contractor
- The specifications, specifically the Supplementary Instructions to Respondents (SIR), will outline what that the Required Experience will be entail
- Projects submitted for the Prime Contractor and the Key Subcontractors, will need to clearly demonstrate, completely and sufficiently the scope is similar
  - Services must have been performed successfully and continuously provided for the specified number of years in the SIR

# W-9 Project Key Dates

- August 28, 2023 **Contractor Outreach Meeting**
- September 28, 2023 **Disclaimer, Questions, Comments and Feedback Deadline**
- March 2024 **Advertise for Construction**
- April 2024 **Sealed Proposals Due**
- April – May 2024 **Proposals Evaluated & Negotiation**
- July 2024 **SAWS Board Approval and Award**
- July 2024 **NTP Issued**
- July 2026 **Construction Completion**



# W-52 Project Key Dates

- August 28, 2023 **Contractor Outreach Meeting**
- September 28, 2023 **Disclaimer, Questions, Comments and Feedback Deadline**
- January 2024 **Advertise for Construction**
- February 2024 **Sealed Proposals Due**
- February – March 2024 **Proposals Evaluated & Negotiation**
- May 2024 **SAWS Board Approval and Award**
- May 2024 **NTP Issued**
- March 2026 **Construction Completion**

# Questions, Comments and Feedback

- **Lindsay Esquivel** will be the Point of Contact for questions, comments and feedback for this informational meeting, as well as the RFCSP.
- Should be submitted no later than September 28, 2023 by 4:00 PM (CDT)
- Must be submitted in writing:

[Lindsay.Esquivel@saws.org](mailto:Lindsay.Esquivel@saws.org)

# Additional Reminders

- Register now if you haven't already through SAWWS Vendor Registration Program on the SAWWS website at [www.saws.org](http://www.saws.org) to ensure access to the latest information.
- Once the projects are posted, to receive updates on specific projects, registered vendors must 'Subscribe' to the each of the projects by selecting the project, and clicking 'Subscribe' under

Contract & Project Management System

Future Contract Opportunities

---


Procurement Bids

Construction & Materials Specifications

Developer Resources

Design Resources

Vendor Registration



San Antonio Water System is accepting submissions until the closing date:

Results 1 - 21 of 21

Type	Solicitation No.	Job No.	Project Name
			Request for Interest Meeting – Tunneling Contractors & Support Services Subcontractor W-6 Upper Segment, Hwy 90 to SW Military Drive Sewer Main Large Diameter
IFB	B-19-025-AT	20-0108	2020 Annual Water Distribution Leak Repairs, Package 1
IFB	B-19-026-AT	20-0109	2020 Annual Water Distribution Leak Repairs, Package 2



Notify Me

Receive updates sent straight to your inbox.





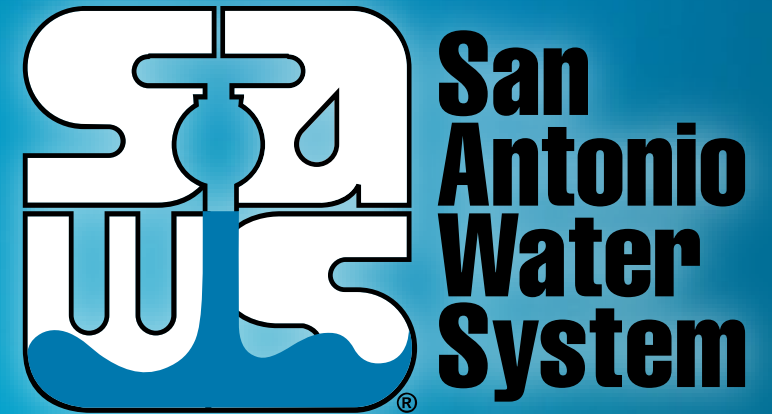
# W-9: Upper Leon Creek Sewer Capacity Storage and Relief – Culebra Creek to Whitby Road

Gerardo Gomez , P.E.

Project Manager, SAWS

Jeff Farnsworth, P.E.

Project Engineer of Record, Kimley-Horn & Associates

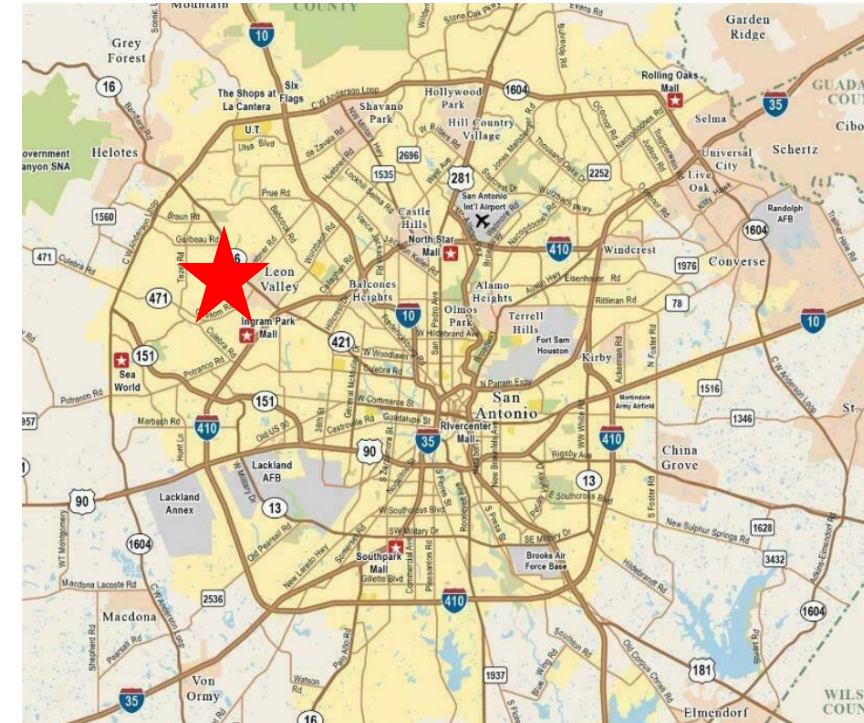
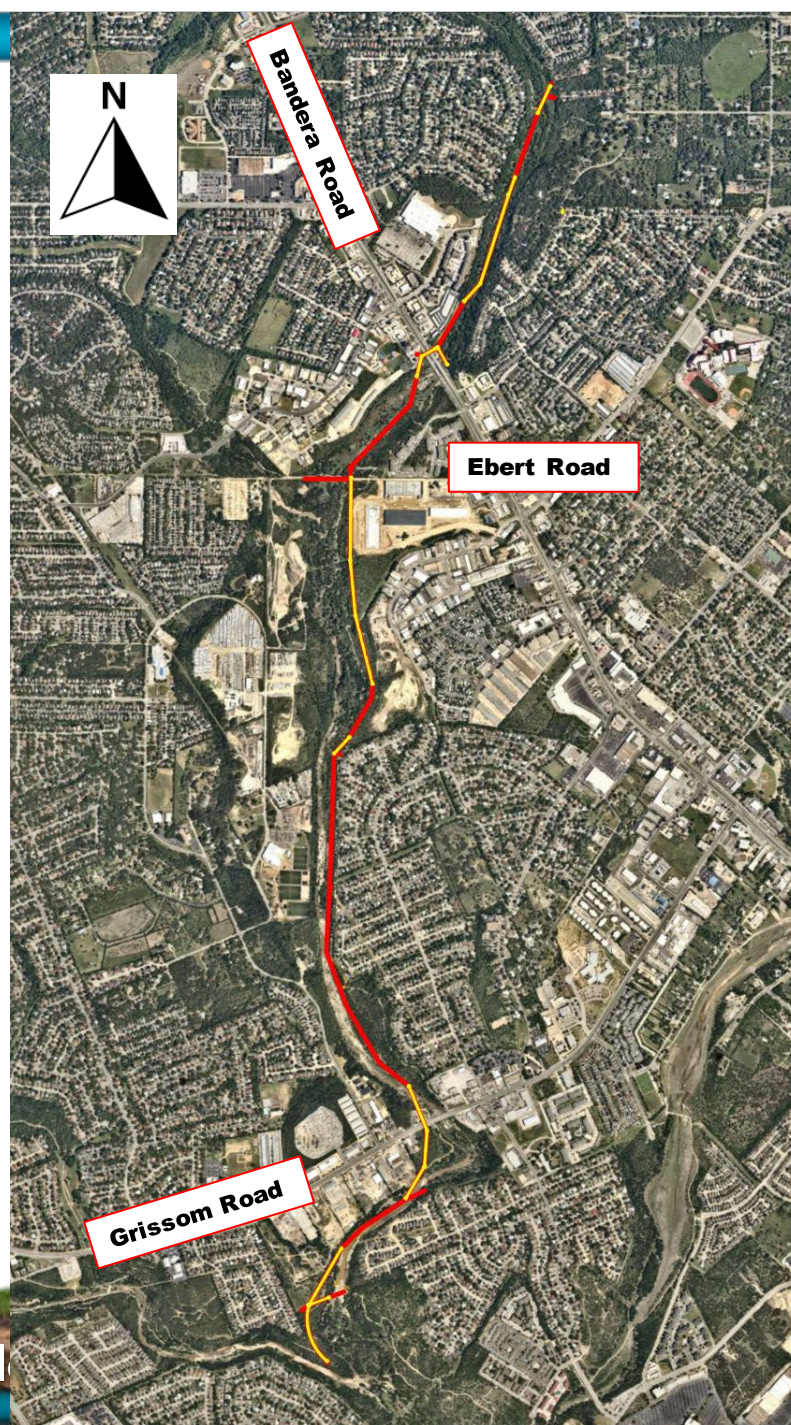


MAKING SAN ANTONIO  
**WATERFUL** 



# Project Location

- Project is located in City of San Antonio
- Downstream Connection Point – W52 Project
- Upstream Connection Point – North of Bandera Road
- The alignment follows Leon Creek



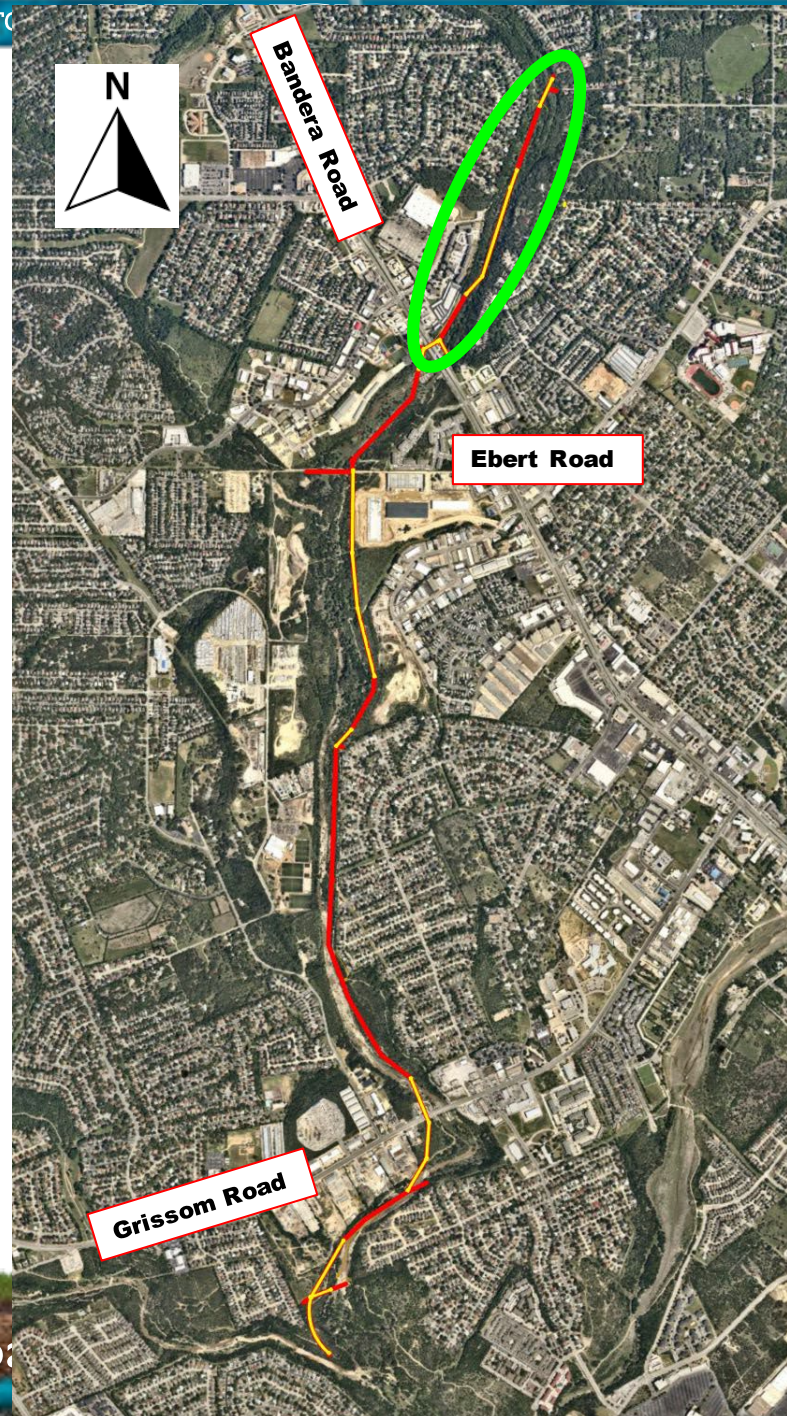


# Project Overview

- This project is critical to SAWS to meet the Consent Decree Order issued by the Environmental Protection Agency and increase the sewer capacity of the infrastructure along Leon Creek.
- Construction of approximately 24,000-LF of 8-, 10-, 27-, and 48-inch diameter Gravity Sanitary Sewer Pipeline.
- Construction activities occur in the 100-year floodplain.
- Area is undeveloped (grass, brush, and trees) and follows Leon Creek
- SAWS and the Design Team are working to obtain permanent easements for entire pipeline alignment.
- Project anticipated to be advertised in March 2024 and last approximately 24 months.

# Overall Alignment

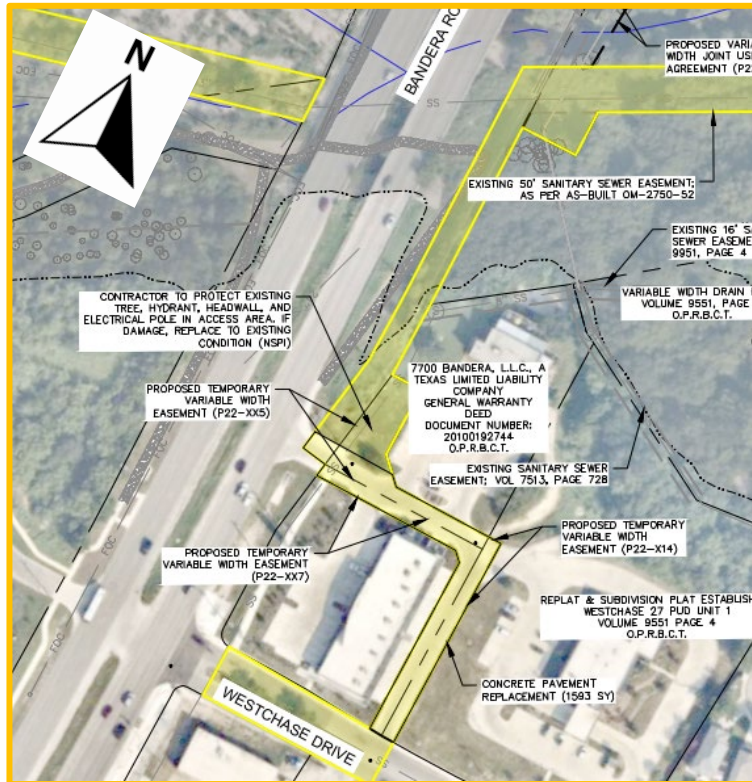
- **Upper Segment**
- Middle Segment
- Bottom Segment



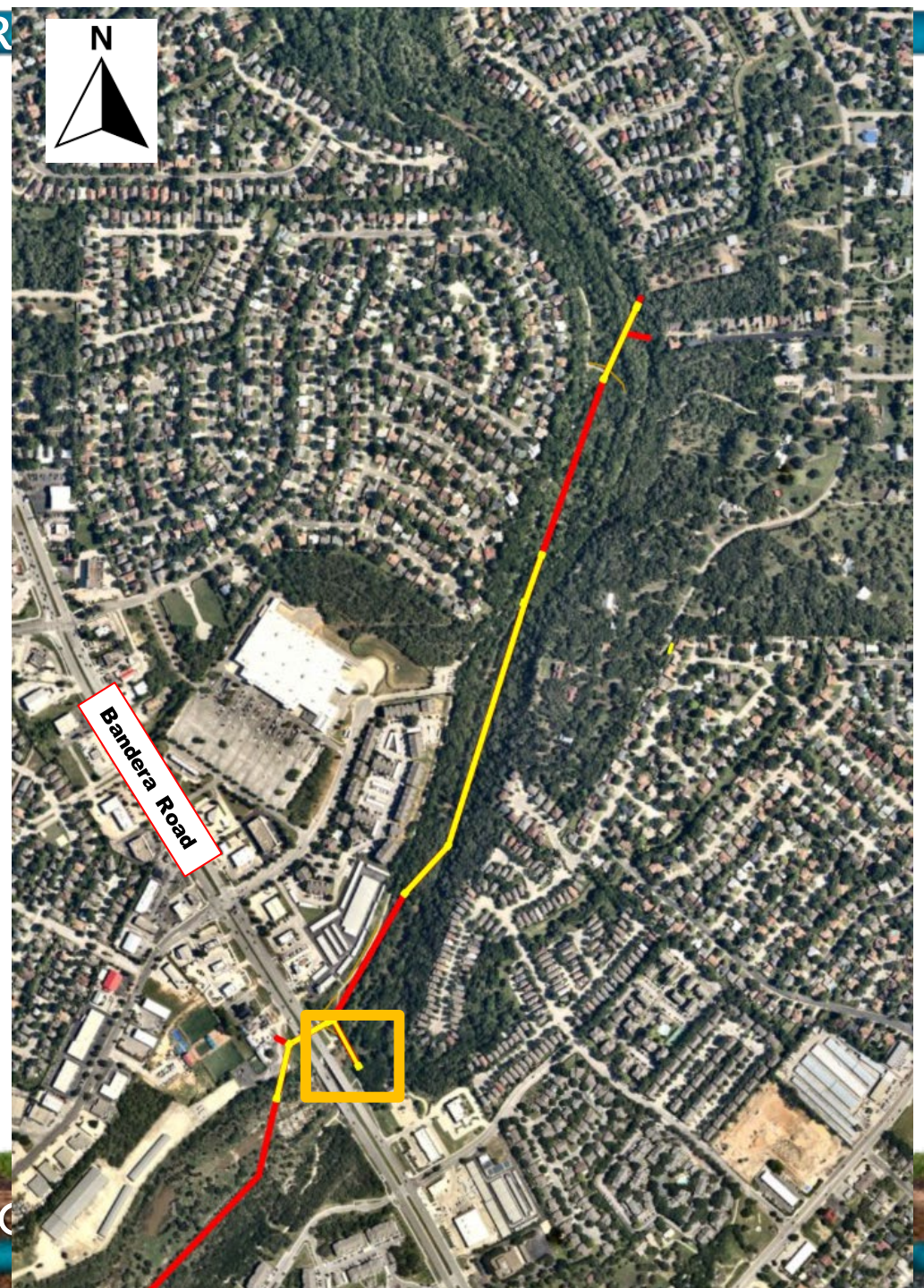


# Overall Alignment

## Upper Segment – Bandera Road to Upstream Connection



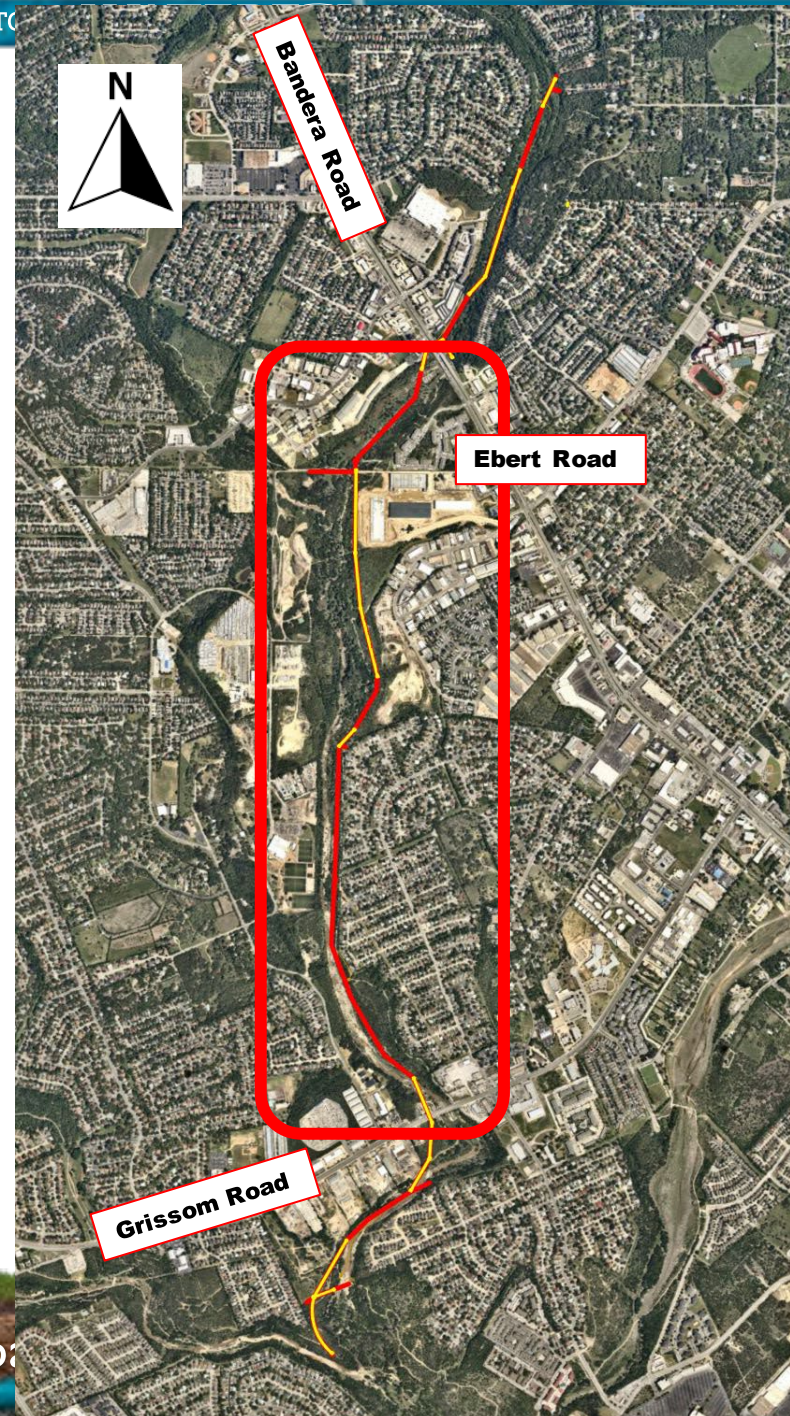
North bound Bandera Road to access north of Bandera Road.





# Overall Alignment

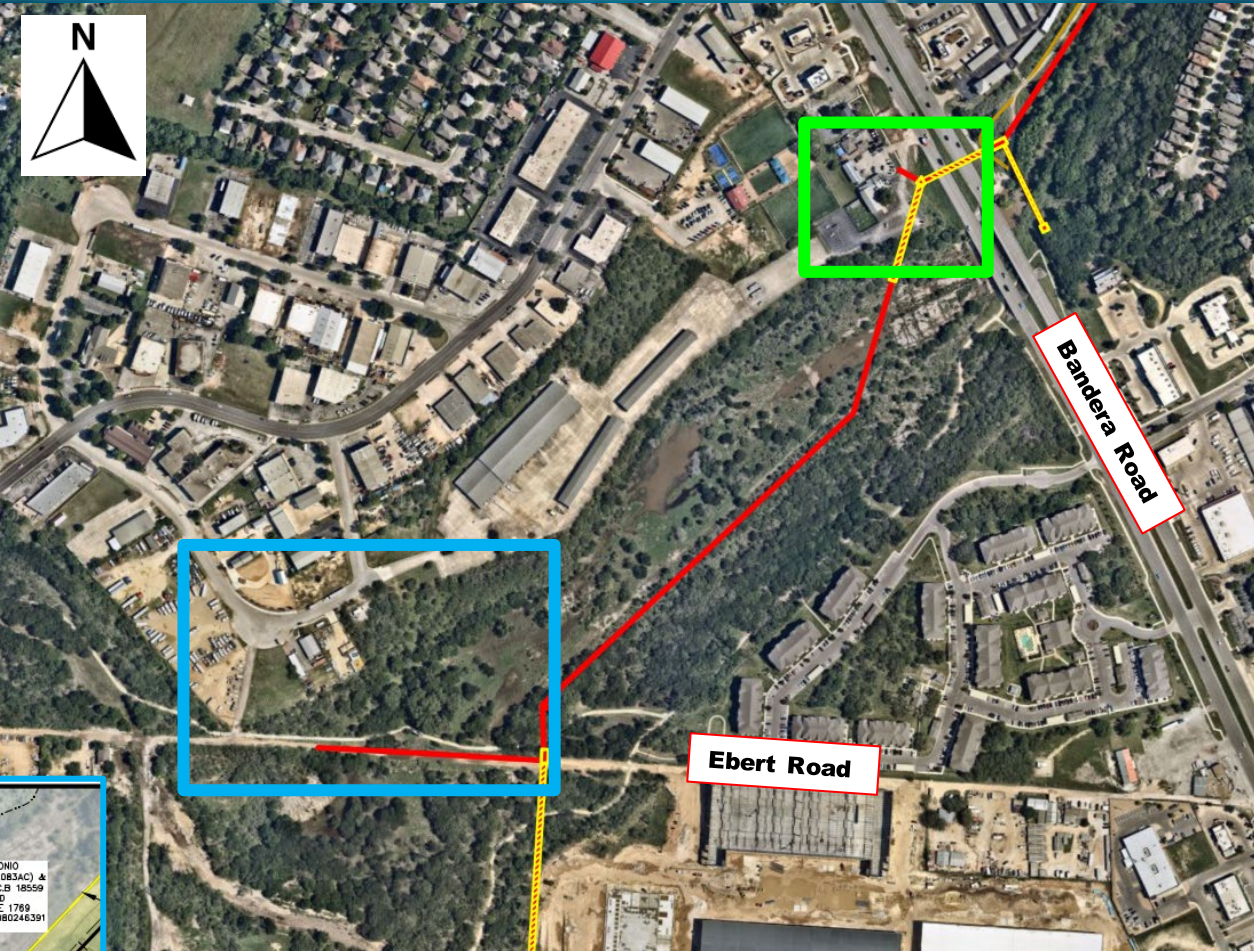
- Upper Segment
- **Middle Segment**
- Bottom Segment



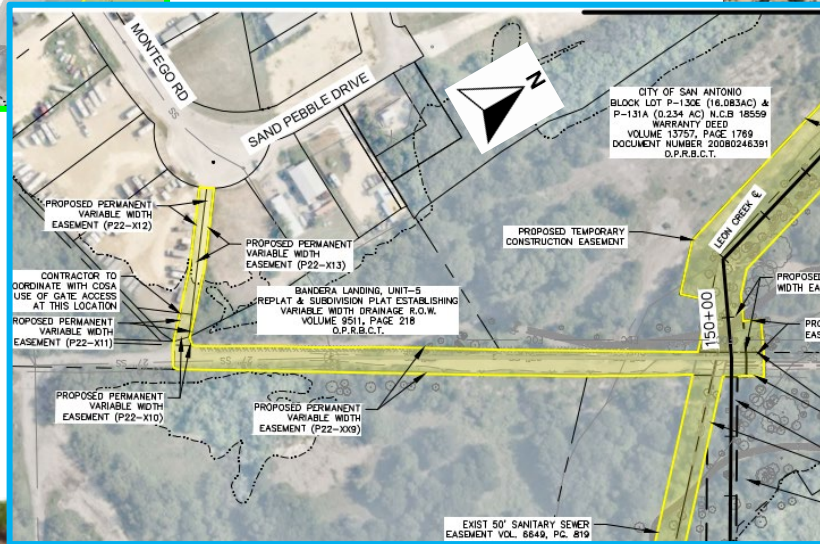
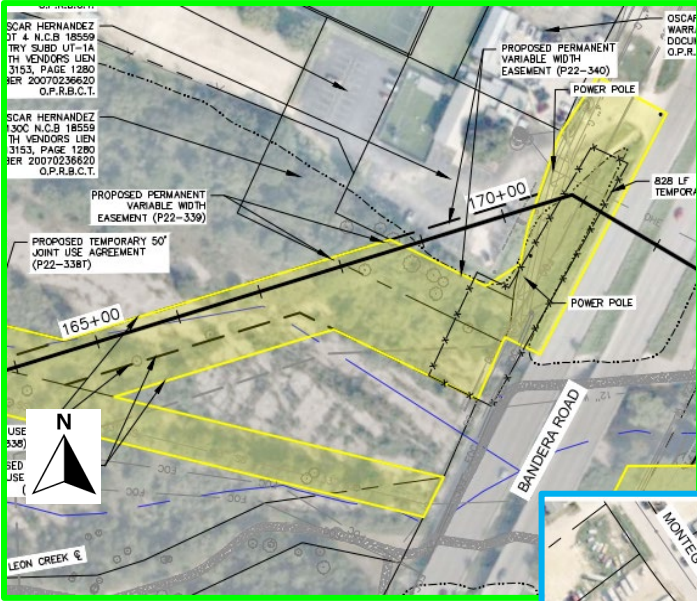


# Overall Alignment

## Middle Segment – Grissom Rd to Bandera Rd



South bound Bandera Rd to access south of Bandera Rd

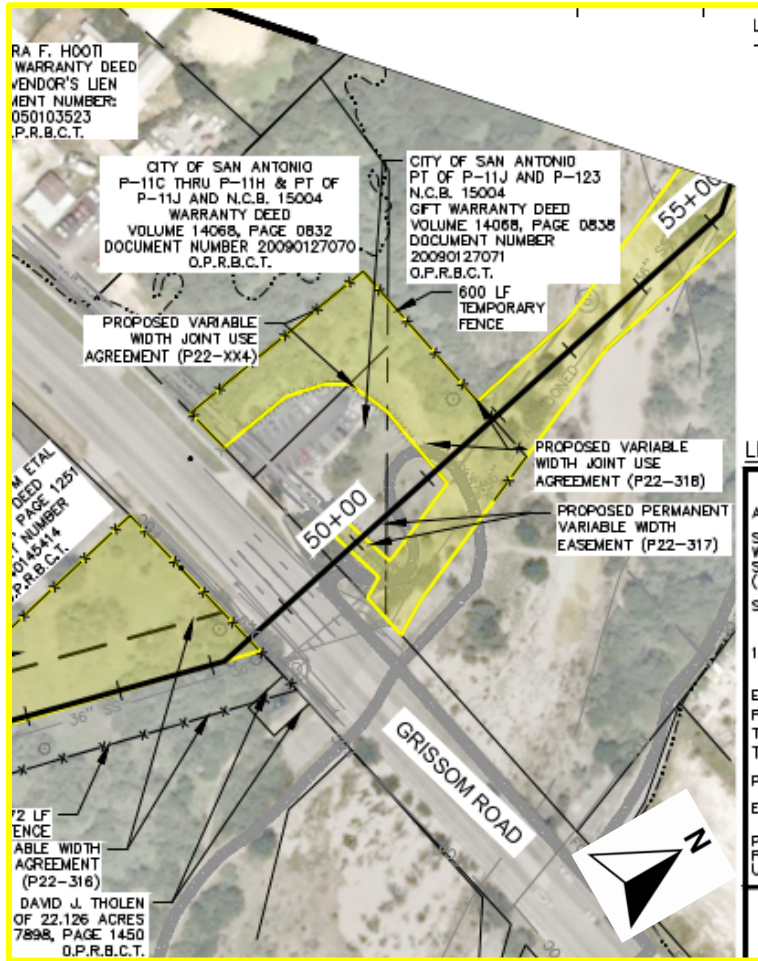


Sand Pebble Dr to Ebert Rd



# Overall Alignment

## Middle Segment – Grissom Rd to Bandera Rd



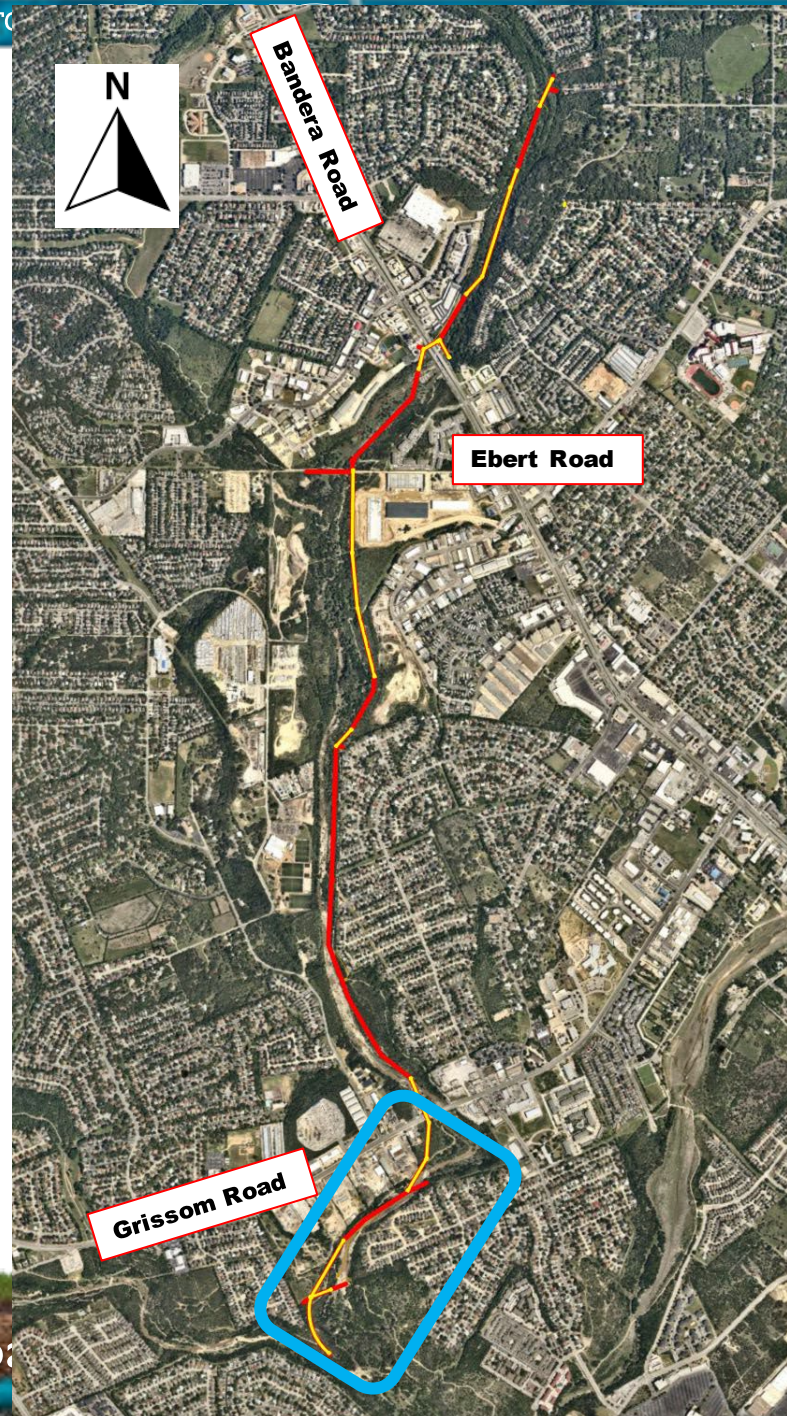
West bound Grissom Rd to access north of Grissom Rd





# Overall Alignment

- Upper Segment
- Middle Segment
- **Bottom Segment**

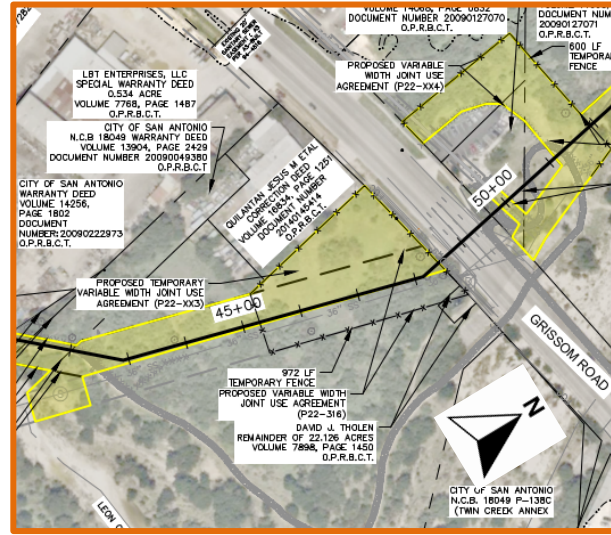




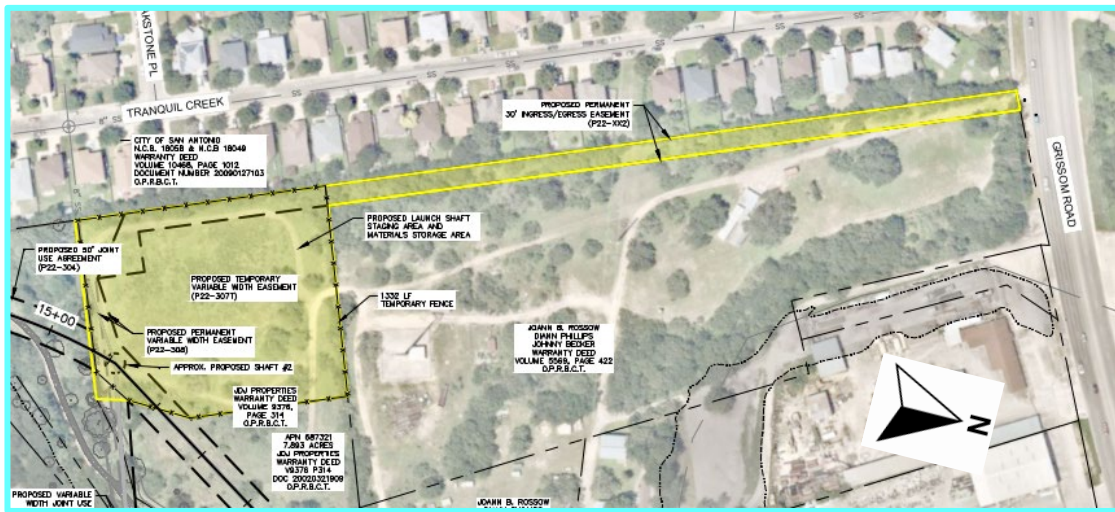
# Overall Alignment

## Bottom Segment – W-52 Connection Point to Grissom Rd

East bound Grissom Rd to  
access south of Grissom Rd



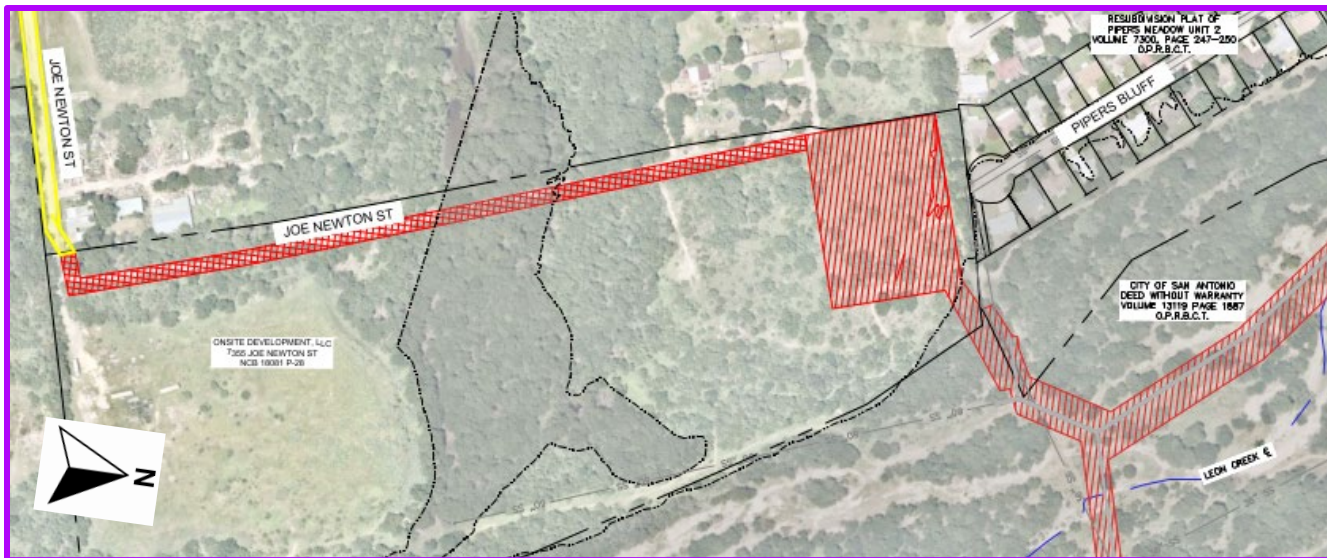
East bound Grissom  
Road to access tunnel shaft.





# Overall Alignment

## Bottom Segment – W-52 Connection Point to Grissom Road



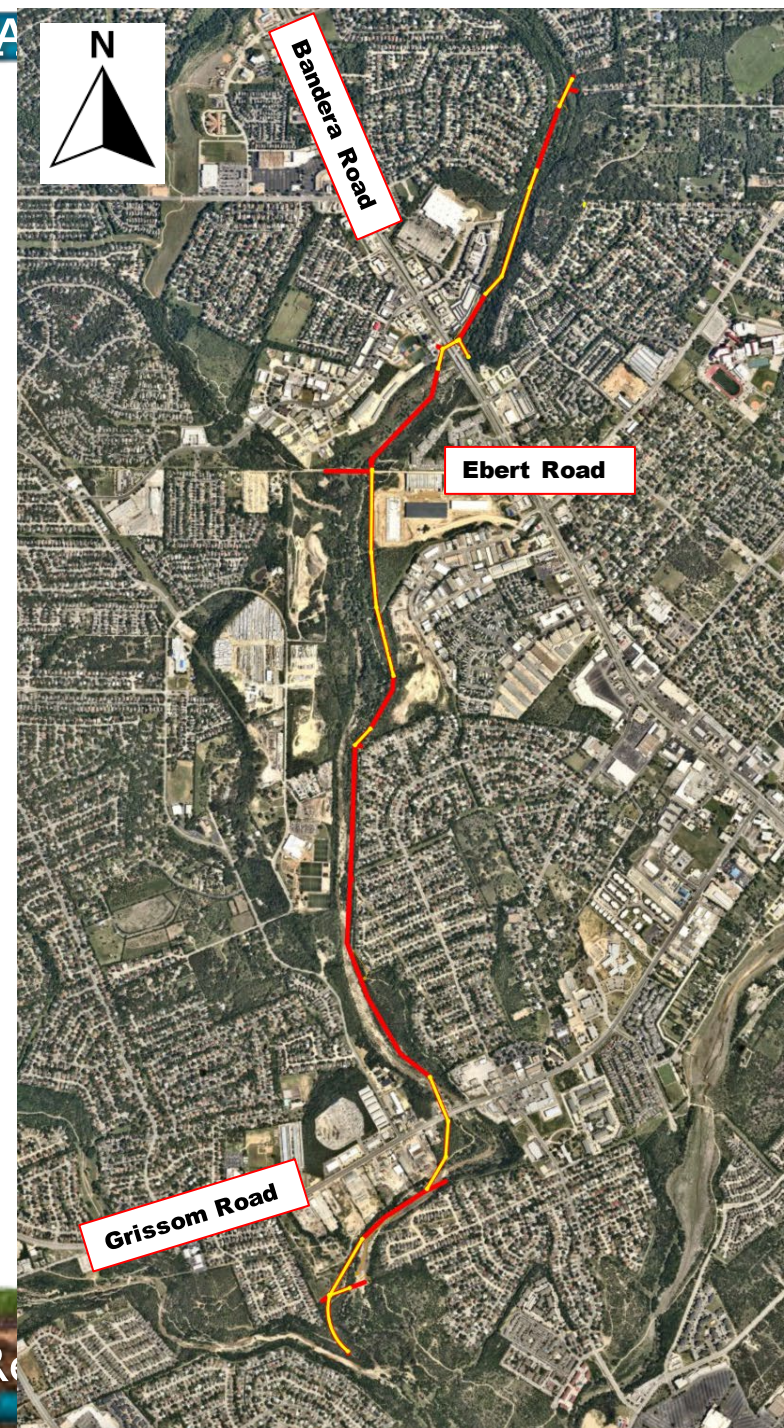
Joe Newton St to Leon Creek  
using W-52 easements





# Project Details – Tunnel

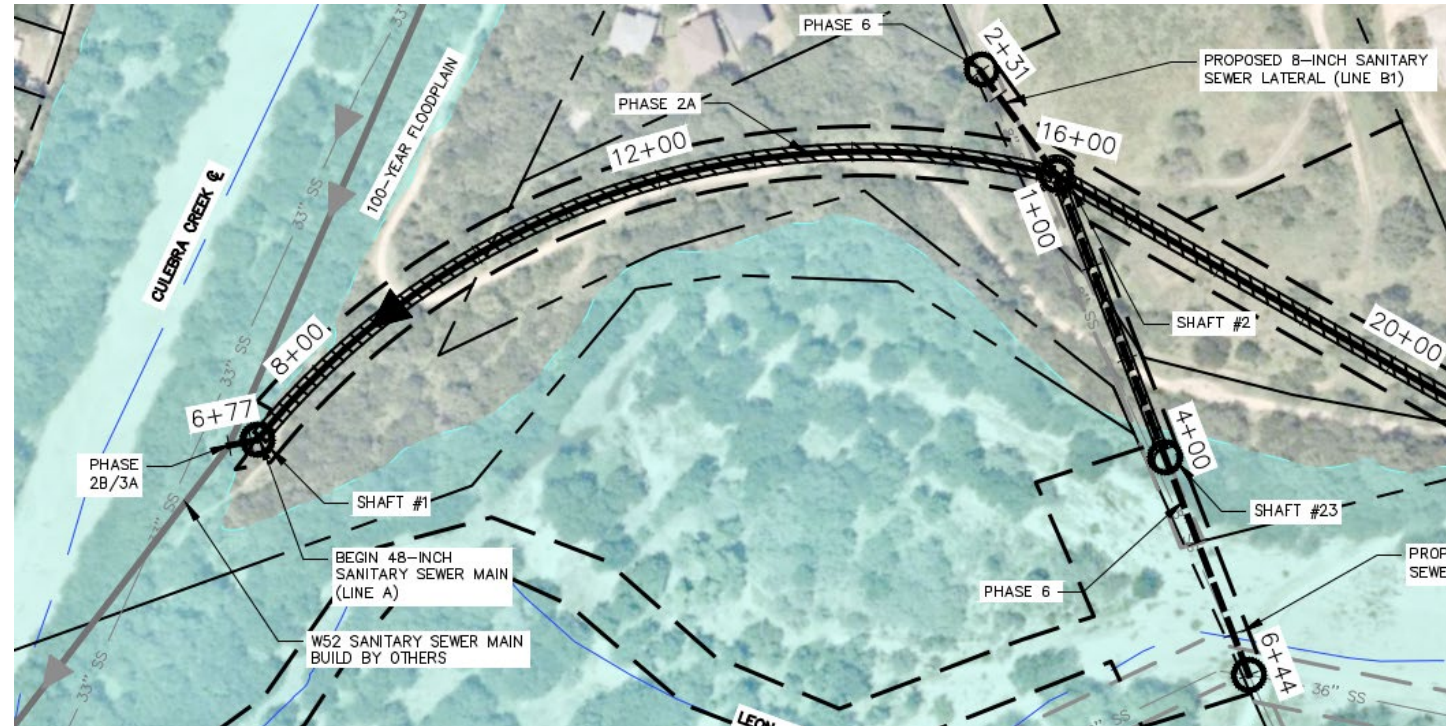
- Total Trenchless – 10,000 LF
  - Includes: Bandera Rd (TxDOT), Grissom Rd (TxDOT), numerous CoSA Parks locations





# Project Details – Curved Tunnel

- Curved tunnel segment
  - 800-ft radius
  - 48-inch carrier pipe
  - Length – 875-LF
  - Slope – 0.20%



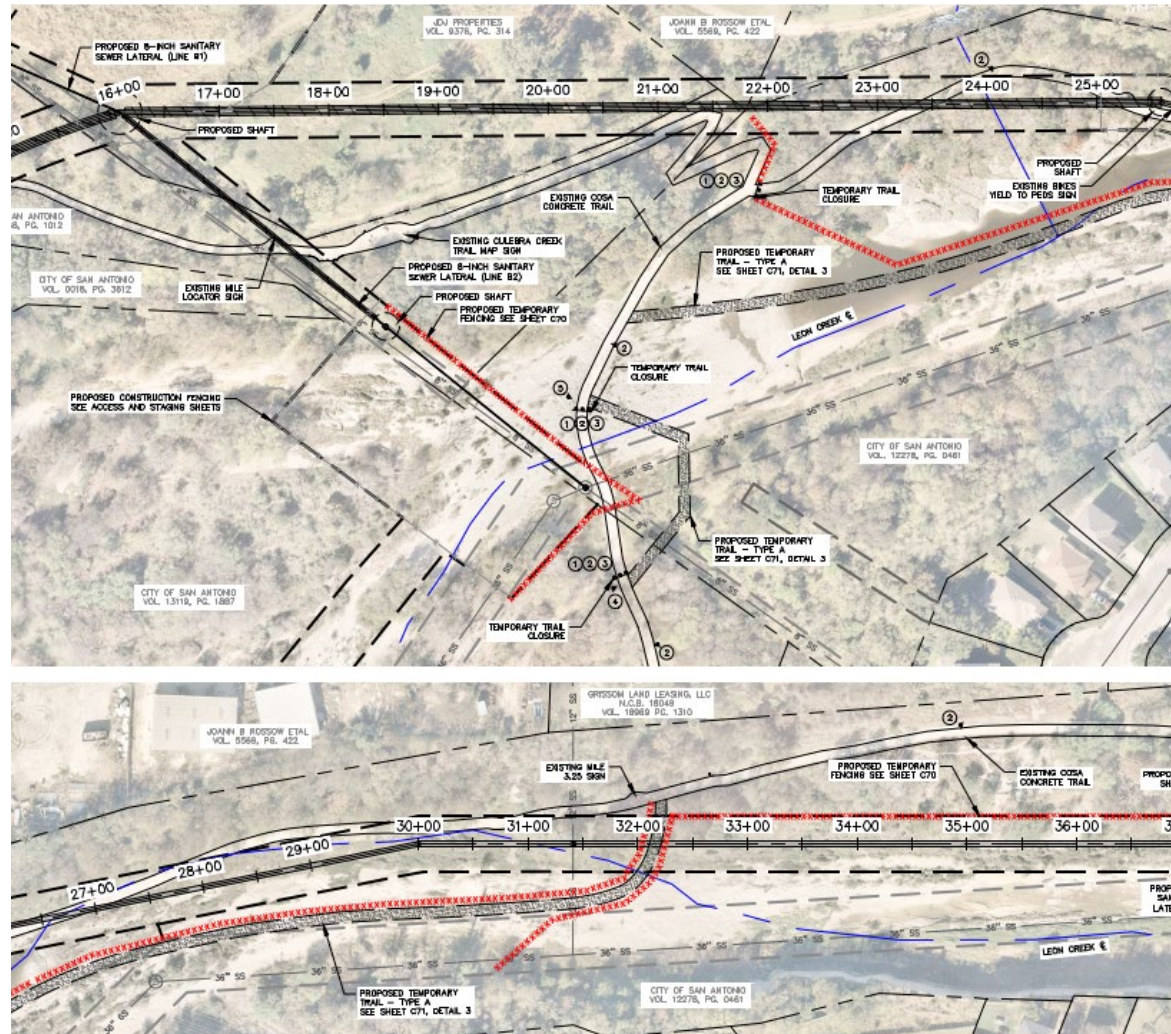


# CoSA Parks/Trail/Trees Protection





# CoSA Parks – Temporary Trails and Protection



# Contractor Requirements

- Contractor must comply with all with CoSA Parks, CoSA Floodplain, ROW, and Tree Permit Requirements.
- Clearing Plan - All tree/vegetative trimming/removal shall be proposed through a clearing plan and approved by **Owner, Engineer, and CoSA Parks.**



# QUESTIONS?

SAWS Point of Contact:

**Lindsay Esquivel– (210) 233-3409**

**[Lindsay.Esquivel@saws.org](mailto:Lindsay.Esquivel@saws.org)**





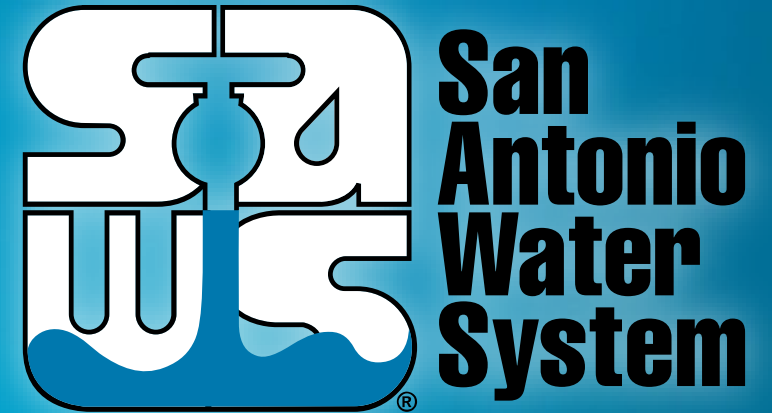
# W-52 Culebra Creek Sewer Capacity Storage

Gerardo Gomez , P.E.

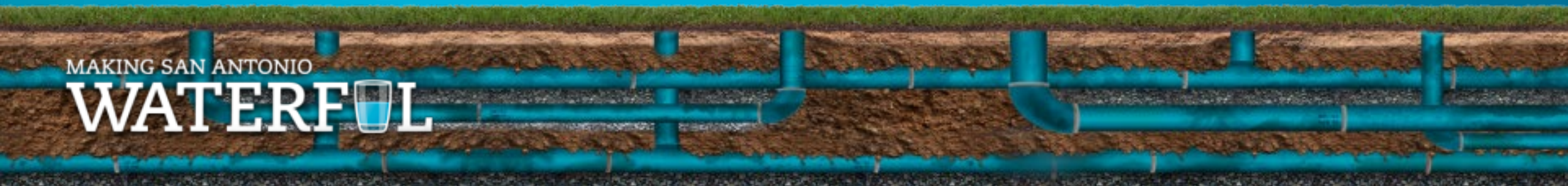
Project Manager, SAWS

Michael Persyn, P.E.

Project Engineer of Record, K Friese + Associates



MAKING SAN ANTONIO  
**WATERFUL** 



# Project Overview

- This project is critical to SAWS to meet the Consent Decree Order issued by the Environmental Protection Agency and increase the sewer capacity of the infrastructure along Leon Creek.
- Construction of approximately 6,850 LF of 8-, 10-, 15-, 42, 48-, and 60-inch diameter Gravity Sanitary Sewer Pipeline.
- Construction activities occur in the 100-year floodplain.
- Located in Cathedral Rock Park and along Leon Creek Greenway
- SAWS and the Design Team are working to obtain permanent easements for entire pipeline alignment.
- Project anticipated to be advertised in January 2024 and last approximately 22 months.



# Project Location

- Downstream Connection Point – Near Confluence of Leon and Culebra Creeks
- Upstream Connection Point – South of Grissom Road (Cathedral Rock Park)





# Project Overview

- ~6,850 LF Gravity Sewer Pipeline
- ~4,200 LF 42" Trenchless
- ~2,300 LF 8"-60" Open Cut
- Approx. Maximum Open Cut Depth = 29'
- Majority of Work Within the 100-Year Floodplain





# Alignment Features





# COSA Parks/Trails/Trees

- Majority of alignment is within CoSA Parks property
- Contractor must comply with CoSA Parks, CoSA Floodplain, and Tree Permit Requirements
- ~9.5 Acres of Tree Clearing
- Alignment crosses existing trails
  - Temporary trail required
  - Trail restoration
  - Flaggers required





# Project Details - Tunneling

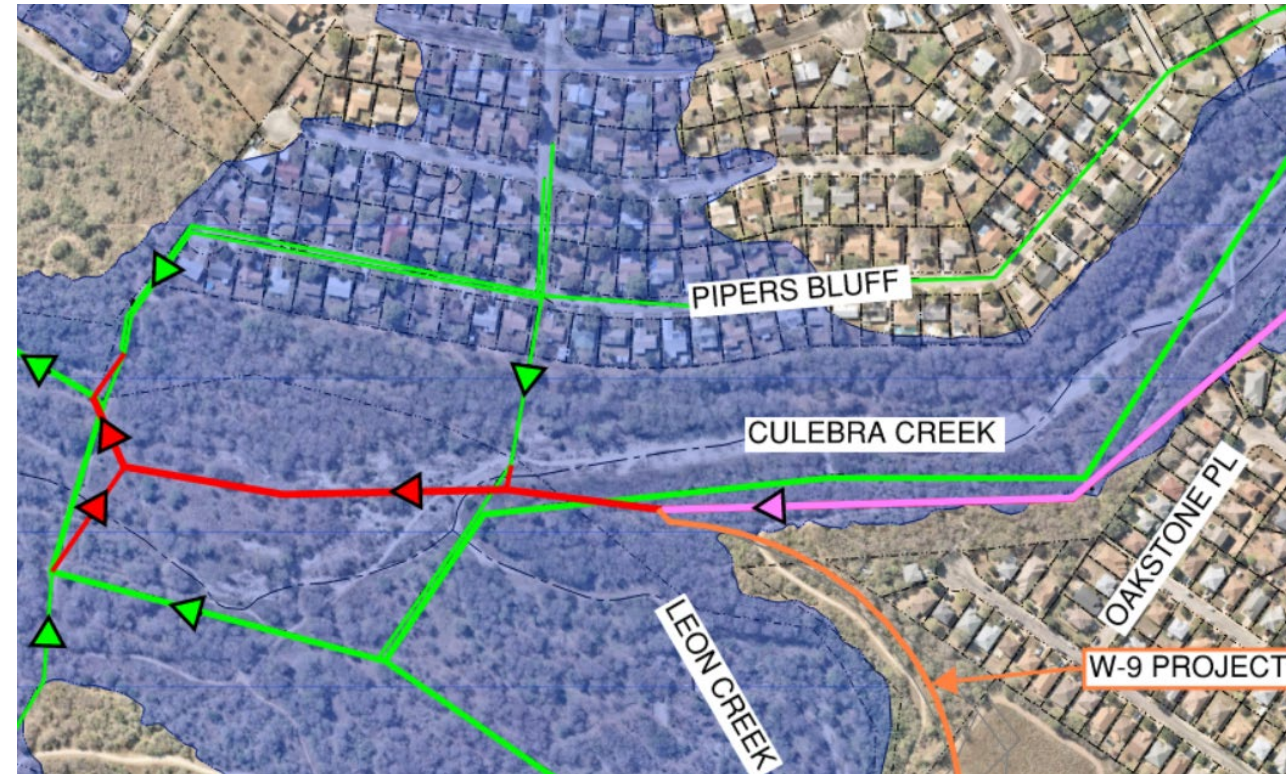
- 6 Separate Tunneled Sections
- Longest Tunneling Section is 935 LF
- Tunneling added to minimize impacts to trees, parks, and overall project risk





# Sequencing Required

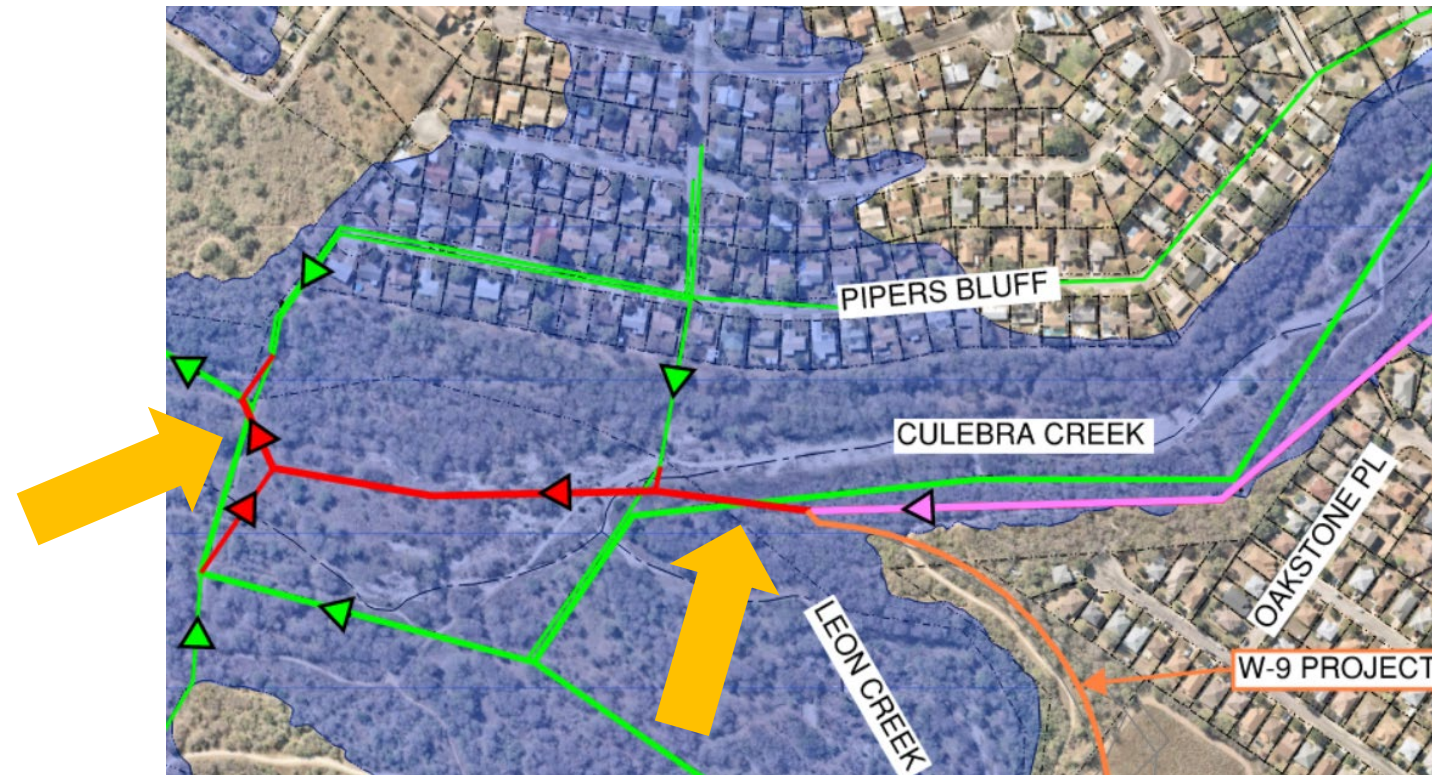
- Coordination with concurrent work by others on W-9 Leon Creek Capacity Relief Project
- Milestone for completion of Phase I to clear access to connection point for W-9 contractor
- Shared access point to downstream connection





# Project Details – Bypass/Conflicts

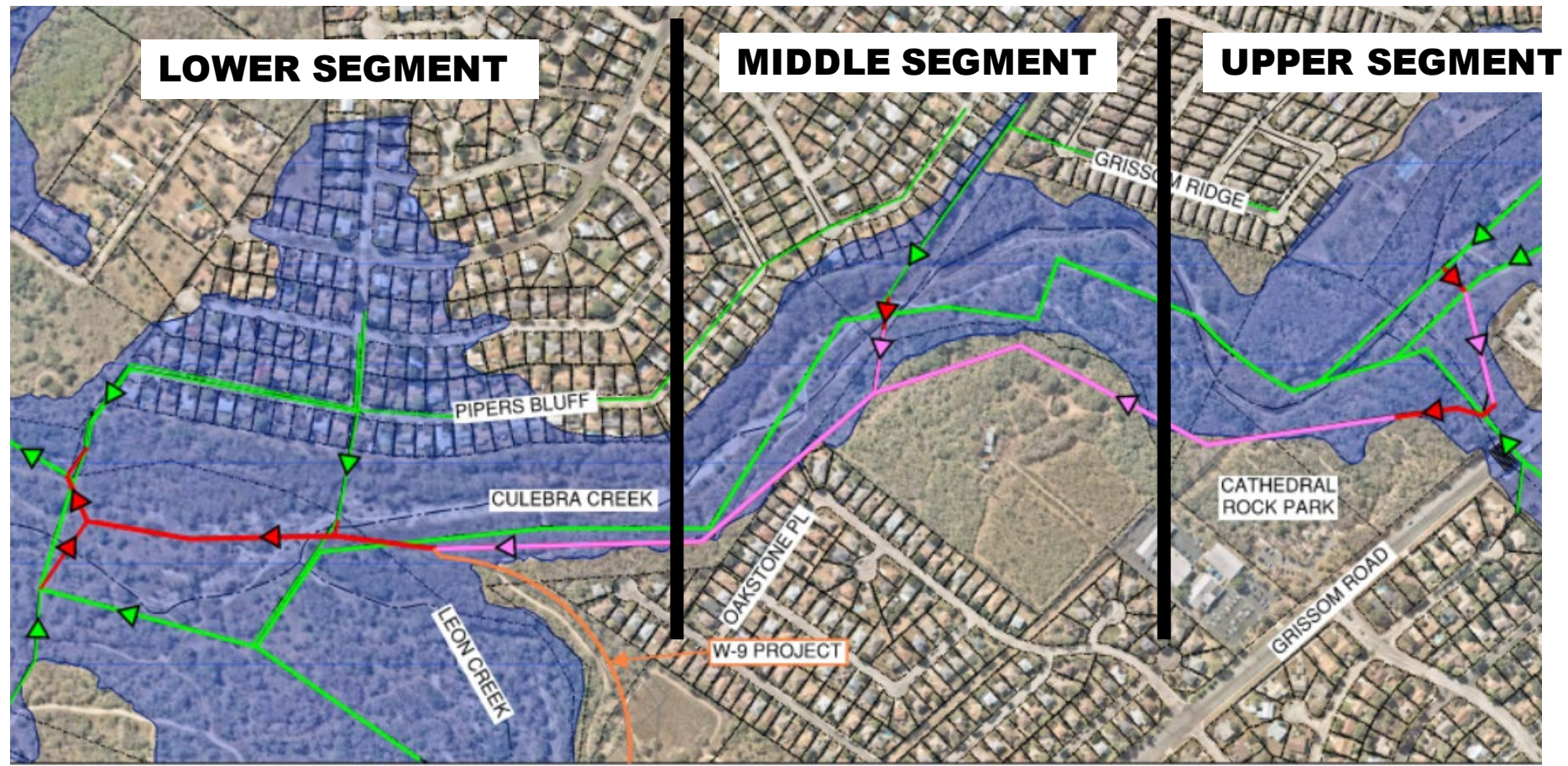
- Bypass is situated within the 100-Year Floodplain
- Two setups required in Phase I due to vertical conflict with existing main





# Construction Access

- No continuous access for sewer installation





# Construction Access (Lower Segment)

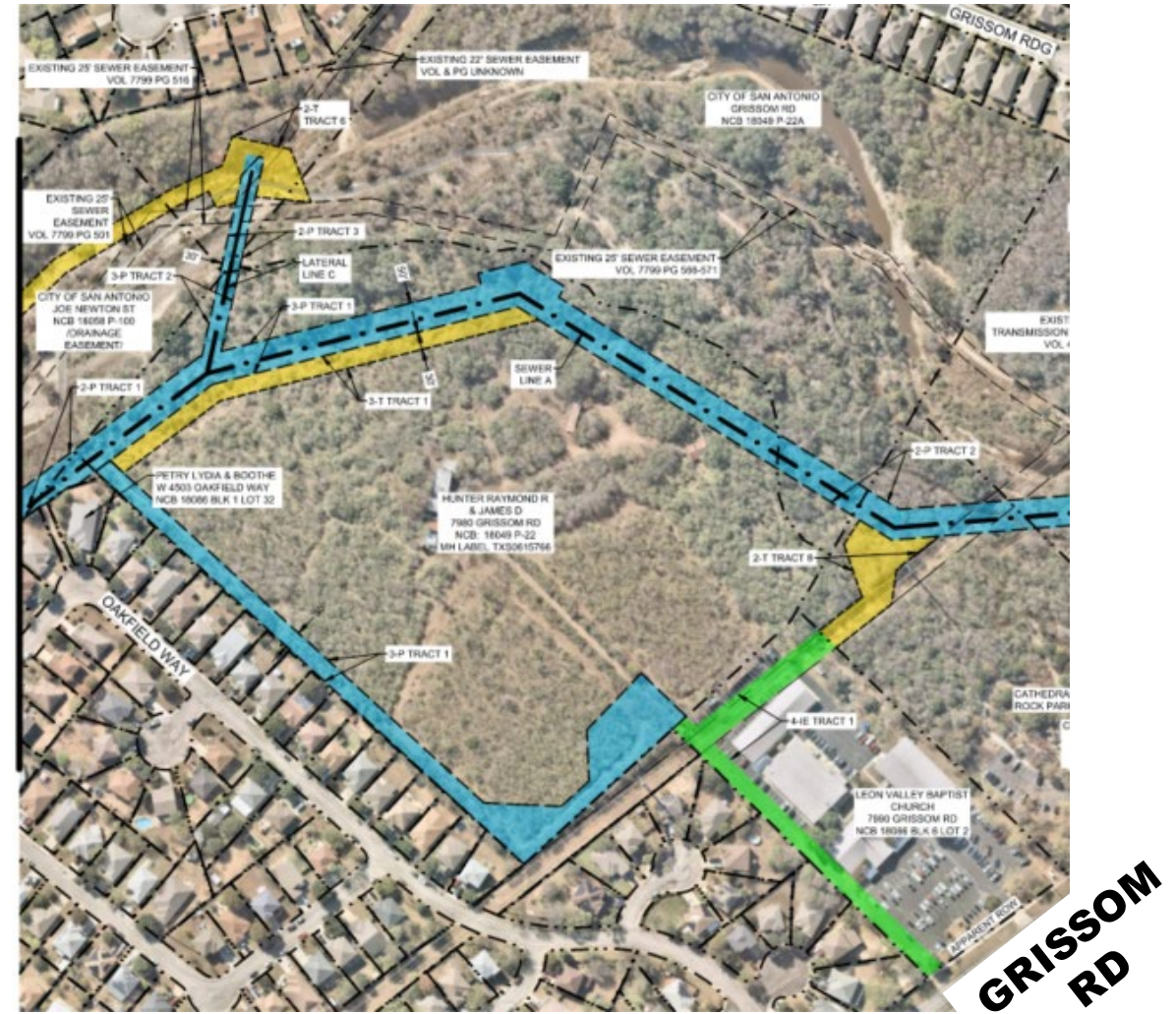
- Access off Joe Newton Street onto private property for staging/access
- Access through Culebra Creek up to STA 41+00 (Line C)





# Construction Access (Middle Segment)

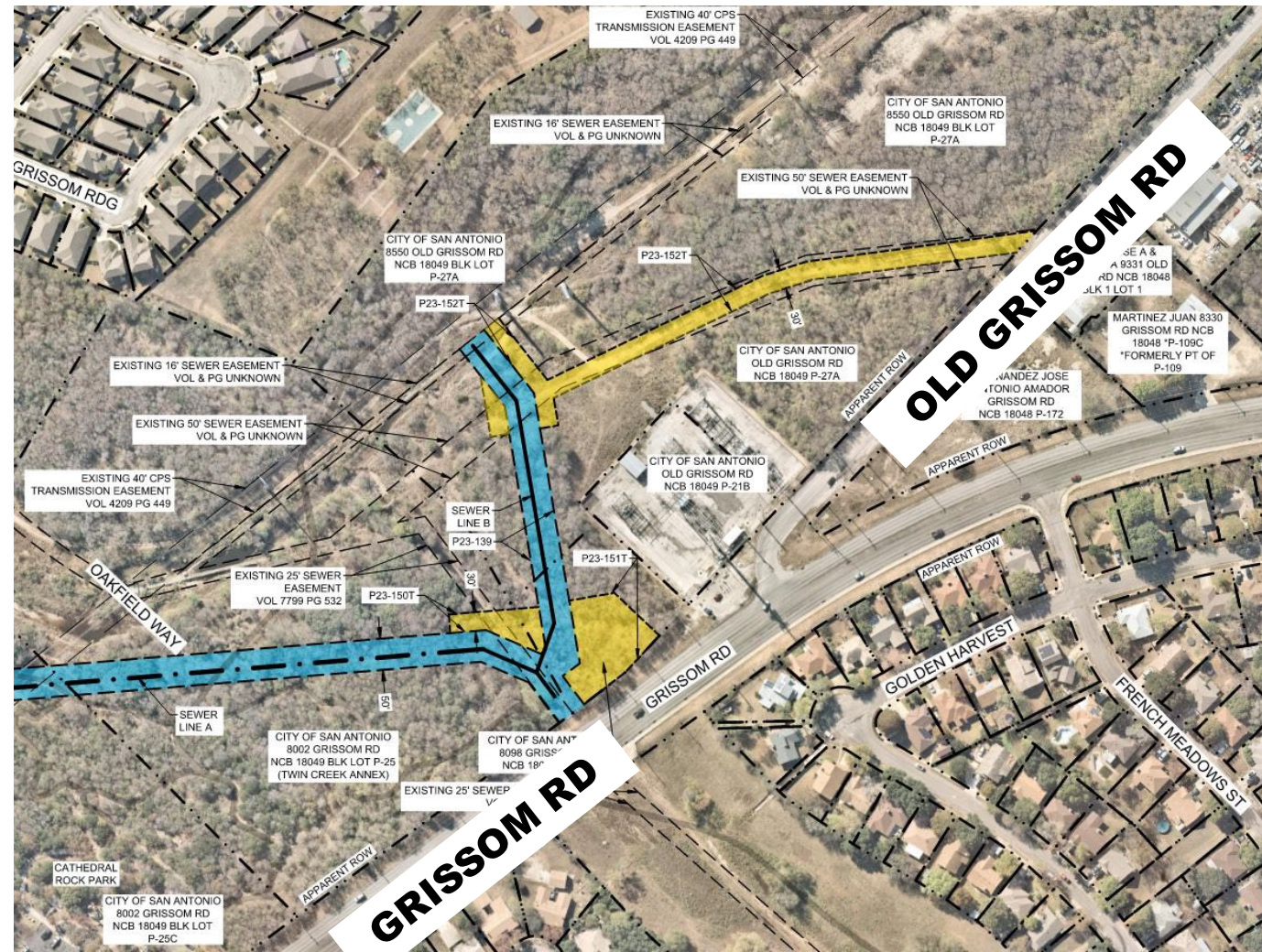
- Access off Grissom Road onto ingress/egress easement to a private property for access
- Access through ingress/egress easement to shaft within near CPS electric easement (STA 53+50)





# Construction Access (Upper Segment)

- Access off Old Grissom Road onto temporary easement on CoSA property for access





# Abandonment

- ~ 7,975 LF 15”-42” Sanitary Sewer
- Challenging access – minimize tree removal
- Longer pumping lengths required





# QUESTIONS?

SAWS Point of Contact:

**Lindsay Esquivel– (210) 233-3409**

**[Lindsay.Esquivel@saws.org](mailto:Lindsay.Esquivel@saws.org)**





# W-9: Upper Leon Creek and W-52 Culebra Creek Capacity Relief Contractor Outreach Meeting

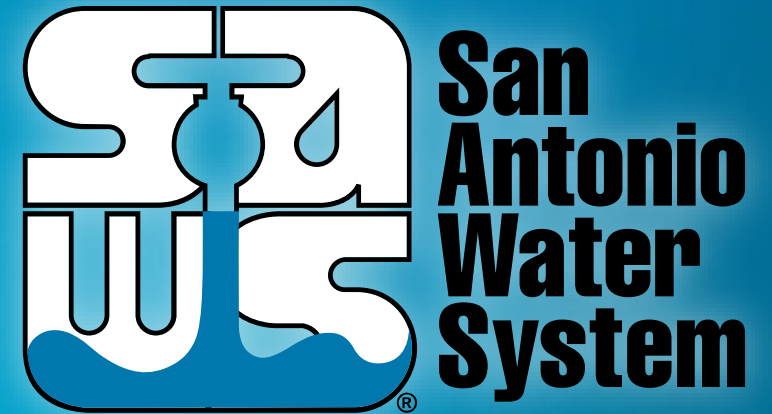
Cristina Brantley, P.E., Director, Engineering Pipelines, SAWS

Cristina DeLaGarza, P.E., Manager, Engineering Pipelines, SAWS

Gerardo Gomez, P.E., Manager, Engineering Pipelines, SAWS

Roxanne Eguia, SMWB Program Specialist, SAWS

Lindsay Esquivel, Contract Administrator, SAWS



August 28, 2023 at 2:00 PM

MAKING SAN ANTONIO  
**WATERFUL**

